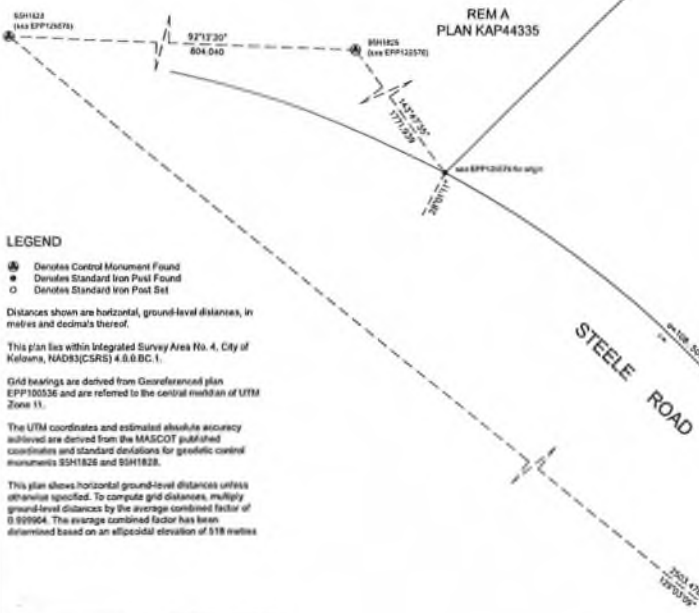


REFERENCE PLAN OF PART OF LOT 1, SEC 29, TP 29, SDYD,  
 PLAN EPP100536 EXCEPT PLANS EPP120254 AND EPP126576.

PLAN EPP152450

PURSUANT TO SECTION 107 OF THE LAND TITLE ACT  
 BCGS 82E.083  
 SCALE 1:500 METRIC

0 10 20 30 40 50  
 The intended plot size of this plan is 560mm in width by 432mm in height (C-size) when plotted at a scale of 1:500 METRIC.



LEGEND

- ⊕ Denotes Control Monument Found
- Denotes Standard Iron Pin Found
- Denotes Standard Iron Post Set

Distances shown are horizontal, ground-level distances, in metres and decima's thereof.

This plan lies within Integrated Survey Area No. 4, City of Kelowna, NAD83(CRS) 4.0.0 BC.1.

Grid bearings are derived from Georeferenced plan EPP100536 and are referred to the central meridian of UTM Zone 11.

The UTM coordinates and estimated absolute accuracy achieved are derived from the MASCOT published coordinates and standard deviations for geofitic control monuments 95H1828 and 95H1828.

This plan shows horizontal ground-level distances unless otherwise specified. To compute grid distances, multiply ground-level distances by the average combined factor of 0.99994. The average combined factor has been determined based on an ellipsoidal elevation of 518 metres.

NAD83(CRS) 4.0.0 BC.1 UTM ZONE 11 COORDINATES			
Point	Northing	Easting	Absolute Accuracy
95H1828	5521096.415	321781.008	0.03
95H1828	5521127.356	320977.841	0.03

DA Goddard Surveys  
 1315 St. Paul Street, Kelowna BC  
 File: 422063-S0 Phase 7C

SEC 29 TP 29

REM 1  
 PLAN EPP100536

REM 1  
 PLAN EPP51781

ROAD  
 112.3 m<sup>2</sup>

5  
 PLAN EPP126576

This plan lies within the jurisdiction of the Approving Officer for the City of Kelowna.

This plan lies within the Regional District of Central Okanagan.

The field survey represented by this plan was completed on the 20th day of April, 2026.

Simone Percellato, BCL5 8961